

# Creating a Quality Collection

The shoes you collect are not just shoes, they give a chance at a livelihood that someone may not have had before. The shoes you collect should be in good condition, meaning that the soles are intact, they have laces (if necessary), there are no holes, they are dry and clean, and that they still have life left in them. *If you wouldn't give them to your best friend, then they are not worthy to submit with your collection.*

This document includes Do's and Dont's of a proper shoe collection. Please study and apply to your group's shoe drive fundraiser.



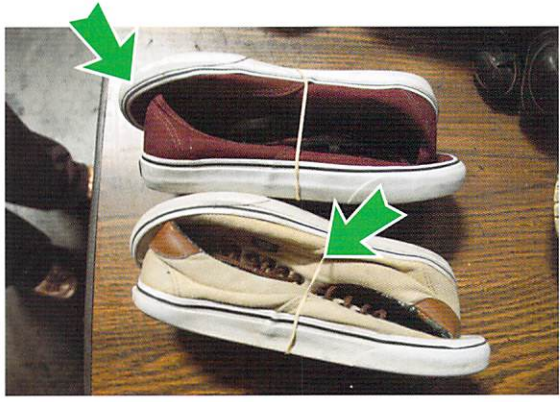


# Shoe Drive Fundraisers

## DO



• Shoes are clean, good condition and bound either by tying the laces together or rubber bands.



• Shoes still in usable condition and bound together.



• Prior to bagging, all shoes in wearable, clean condition.

## DON'T



• Soles are melted, distorted and not wearable



• Soles are too worn and not wearable

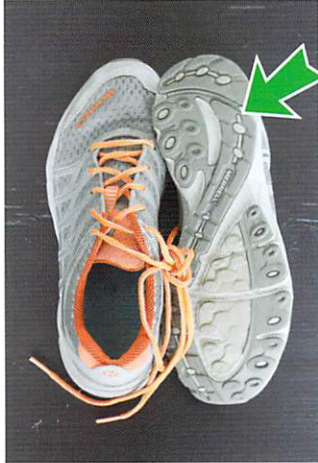


• Heel is broken and overall too worn to be usable



# Shoe Drive Fundraisers

**DO**



•Clean, good condition



•Still wearable, clean, good condition



• Laces intact, lots of life left

**DON'T**



• Wet, moldy



• Sole is falling off. Not in wearable condition.



• Upper is worn through. Not in wearable condition.



# Shoe Drive Fundraisers

**DO**



- CLEAR Bag
- CLEAN Shoes
- ALL SHOES in wearable condition
- 25 pairs in bag
- EVERY PAIR bound by tying the laces or rubber bands



- Rubber band or tie together



- Clean, gently worn, used or new shoes

**DON'T**



- Black unapproved bags

- Not rubber banded or tied



- Wet and not bound together